

# TERNBRIDGE ESTATES / PARKLAND



7141 NW 70th Terrace  
Parkland, Florida 33067



[www.7141nw70terr.info](http://www.7141nw70terr.info)

5 Bedrooms | 4.5 Baths | 3 Car Garage

This totally upgraded home is positioned on a 1/3 acre waterfront estate in Parkland. Features of this beautiful home include 4 bedrooms, 4.5 baths plus study and loft, Saturnia marble floors, crown and applied moldings, high ceilings, abundance of light, and solid wood doors. The huge gourmet kitchen boasts wood cabinets, granite countertops, center island and walk-in pantry. The luxurious master suite features a marble bath and built-in closets, along with the study are downstairs, while the 4 remaining bedrooms and loft are upstairs. This home is great for outdoor entertaining with a covered patio, and fenced heated pool and spa. Ternbridge Estates is a gated community with tennis courts and sidewalks and is located in Parkland's nationally ranked school district! Also located within 5 minutes of this great community is the Terramar Tennis Center, a world class center with a United State Tennis Federation (USTF) tennis program and Tennis Pro Shop.

Schools: Riverglades Elementary School, Westglades Middle School, Stoneman Douglas High School



(954) 752-1986

[www.DuPreeTeam.com](http://www.DuPreeTeam.com)

**Keyes**  
REAL ESTATE • MORTGAGE • TITLE

Information believed accurate but is not warranted.

# ADDITIONAL PHOTOS



INFORMATION BELIEVED ACCURATE BUT NOT WARRANTED



954.752.1986  
[www.floridahomecenter.com](http://www.floridahomecenter.com)

**Keyes**  
REAL ESTATE • MORTGAGE • TITLE

# ADDITIONAL PHOTOS



INFORMATION BELIEVED ACCURATE BUT NOT WARRANTED



954.752.1986  
[www.floridahomecenter.com](http://www.floridahomecenter.com)

**Keyes**  
REAL ESTATE • MORTGAGE • TITLE

# MLS INFORMATION

**Marta DuPree**

**RE1 - SINGLE FAMILY RESIDENTIAL**

**RAGFL**

**ML:** F1158455 **BC:** KEYE37 / The Keyes Company 7

**AR:** 3611 **SH SALE:** N **REO:** N

**STATUS:** A

**AD:** 7141 NW 70 Ter

**CITY:** PARKLAND **RP:** **LLP:**

**LP:** \$799,999

**CT:** BROWARD **F#:** 484102080410

**ZIP:** 33067

**GEOAR:** NW41 **ZN:** PUD

**STYLE:** R33

**#I:** 25

**LG:** BENNINGTON 148-36 B LOT:41 **SQFT:**15006 **FRONTAGE:** **DEPTH:**

**MC:** **TN:** **SE:** **SD:** **PN:** **MAP:** **ST:** FL **TYPE:** / SINGLE

**DV:** TERNBRIDGE ESTATES **SN:** TERNBRIDGE ESTATES **MN:** DOVER

**LA:** 4,212 **TA:** 5,162 **YR:** 2002/ RSL **CONV:** **BED:** 5 **FBATH:** 4 **HBATH:** 1

**GARAG:** 3/ ATT **CPT:** 0 **WF:** 60 **FACE:** NW **F\$:**

**PARK:** PAVERS **PARK RESTR:**

**LT:** .32 ACRES **SF/FF:** 14,153 **LOTDS:** 1/4-1/2A

**WTRFR:** Y/ LAKE **VIEW:** WATER

**WTRAC:** OTHER **DESIGN:** DETACH/ 2STORY **ES:** RIVERG

**CONST:** CBS **ROOF:** S-TILE **MS:** WESTGL

**FLOOR:** MARBLE CARPET **DINE:** FORMAL BREAKAR SNACKBAR **HS:** STONMN

**ROOMS:** GREAT DEN LOFT STORAGE UTIL-LAU

**POOLS:** Y/ BELOWGRD HEATED WHRPOOL **PL:** 15X30 **SPA:** Y

**REM:** TOTALLY UPGRADED 1/3 ACRE WATERFRONT ESTATE. 5 FULL BEDROOMS + STUDY + LOFT! SATURNIA MARBLE FLOORS, CROWN & APPLIED MOLDINGS, SOLID WOOD INTERIOR DOORS! HUGE GOURMET KITCHEN FEATURING WOOD CABINETS, GRANITE TOPS, CENTER ISLAND & WALK-IN PANTRY! MASTER & STUDY DOWNSTAIRS, 4 BDRMS+ LOFT UPSTAIRS. LUXURIOUS MASTER SUITE, MARBLE BATH, BUILT-IN CLOSETS. COVERED PATIO, FENCED & HEATED POOL & SPA. NATIONALLY RANKED TOP SCHOOLS! GATED COMMUNITY WITH TENNIS COURTS & SIDEWALKS. EXCELLENT CONDITION!

**DIR:** 441 TO HILLSBORO BLVD TURN WEST 1/2 MILE ON LEFT(SOUTH SIDE) GO THROUGH GATE TO STOP SIGN TURN R ONTO NW 72 PL GO WEST ADN FOLLOW CURVE (NW 68 DR) TO NW 70 PL TURN R TO STOP SIGN AND TURN RIGHT UNTIL YOU REACH HOME ON LEFT

**BRK-REM:** TO SHOW CALL CSS 888-998-9005. EXCLUDE REFRIG/FREEZER IN GARAGE & W/D IN LAUNDRY RM, THERE IS ANOTHER W/D IN GARAGE INCLUDED THAT WAS PURCHASED 2009

**LV:** 22X23 **DR:** 15X13 **DA:** 11X12 **KT:** 14X15 **FR:** 21X20 **FL:** **PR:**

**MB:** 16X21 **2B:** 15X12 **3B:** 11X14 **4B:** 12X15 **5B:** 16X12 **DN:** 16X12 **PB:**

**BEDRM:** 1BR+GRND ENTRYLVL MBRGRND **UR:** 10X7 **CF:** 6

**MSBTH:** SEPBATH DUALSINKS MASTGRND **PETS:** Y/ 20+

**INTER:** VOLUMCEIL SPLITBED ROMANTUB WALKCLOS BUILT-INS PANTRY FOYER

**EQUIP:** WASHER DRYER REFRIG RANGE DISHWASH ELECWHTR DISPOSAL ICEMAKER MICRO WALLOVEN

**WNDW:** **RESTR:** 20+ OTHER **HOPA:** N

**EXTER:** PATIO SHUTTERS FENCE

**GUEST:** **GUEST SQ FT:**

**SUBDV:** TENNIS SIDEWALK GUARDGAT

**MAINT:** INCLCOMON

**HEAT:** CENTRAL ZONED

**SPRINK:** AUTO

**CABLEAVL:** Y

**COOL:** CENTRAL ELEC

**WTR:** MUNICIPL

**SEWER:** MUNICIPL

**TRMCON:** CONV

**ASSUME:** **DAV/SOH:**

**MPR:** N **TOA:** H **FEE:** \$550.00/ Q

**DMV/ASV:**

**TX:** \$11,153 **TXYR:** 2010 **TAX:** HOMESTEAD

**TM:**

**SPEC:** **POSS:** FUNDING

**LPID:** 0201118 / Marta DuPree

**APH:** 954-752-1986

**OPH:** 954-752-0900 x 0

**2PID:**

**2AG:**

**FAX:** 954-845-3335

**LTY:** ER **ON:**

**ON#:**

**2PH:**

**URL:** [www.7141nw70terr.info](http://www.7141nw70terr.info)

**PHOTO:** 1PLUS

**WD:**

**EMAILA:** [martadupree@dupreeteam.com](mailto:martadupree@dupreeteam.com)

**VT:**

**COBA:** **COTB:** **CONR:** **VAR:** N **JA:** **BRD:** F

**OCCUP:** OWNER **SHOW:** BRKR-RMRKS **LD:** **XD:**

**PREV STATUS:** **STATUS CHNG:** **OK ADV:** N **L1:**

**PREV\$:** \$849,000 **PRICE CHNG:** 10/27/11 **ORIG LP:** \$849,000 **L2:**

**INet:** Y/GORGEOUS LAKEFRONT 1/3 ACRE ESTATE. 5 FULL BDRMS + STUDY + LOFT! MARBLE FLOORS, CROWN MOLDINGS, GOURMET WOOD/GRANITE KITCHEN, FENCED HEATED POOL/SPA!

**MOBILE HOME DECAL:** **SZ:** **S#:** **BRAND:**

**FEINCL:** **MISC:**

**PD:** **CONTING:** **DM:** **FURN:** **CD:** **SP:**

**ECD:** **CB:** **SPID:** **S1:**

**TR:** **SC:** **SPID2:** **S2:**

\*(c) 2011 REALTOR Association of Greater Ft. Lauderdale -- INFORMATION IS BELIEVED ACCURATE BUT IS NOT WARRANTED\*

INFORMATION BELIEVED ACCURATE BUT NOT WARRANTED



954.752.1986  
www.floridahomecenter.com

**Keyes**  
REAL ESTATE • MORTGAGE • TITLE

# 1ST FLOOR PLAN



## TERNBRIDGE ESTATES

### THE DOVER at TERNBRIDGE ESTATES by Gordon Homes

1st Floor	2,897 sq.ft.
2nd Floor	1,315 sq.ft.
Total Living	4,212 sq.ft.
Entry	126 sq.ft.
Garage	626 sq.ft.
Covered Patio	198 sq.ft.
Total	5,162 sq.ft.



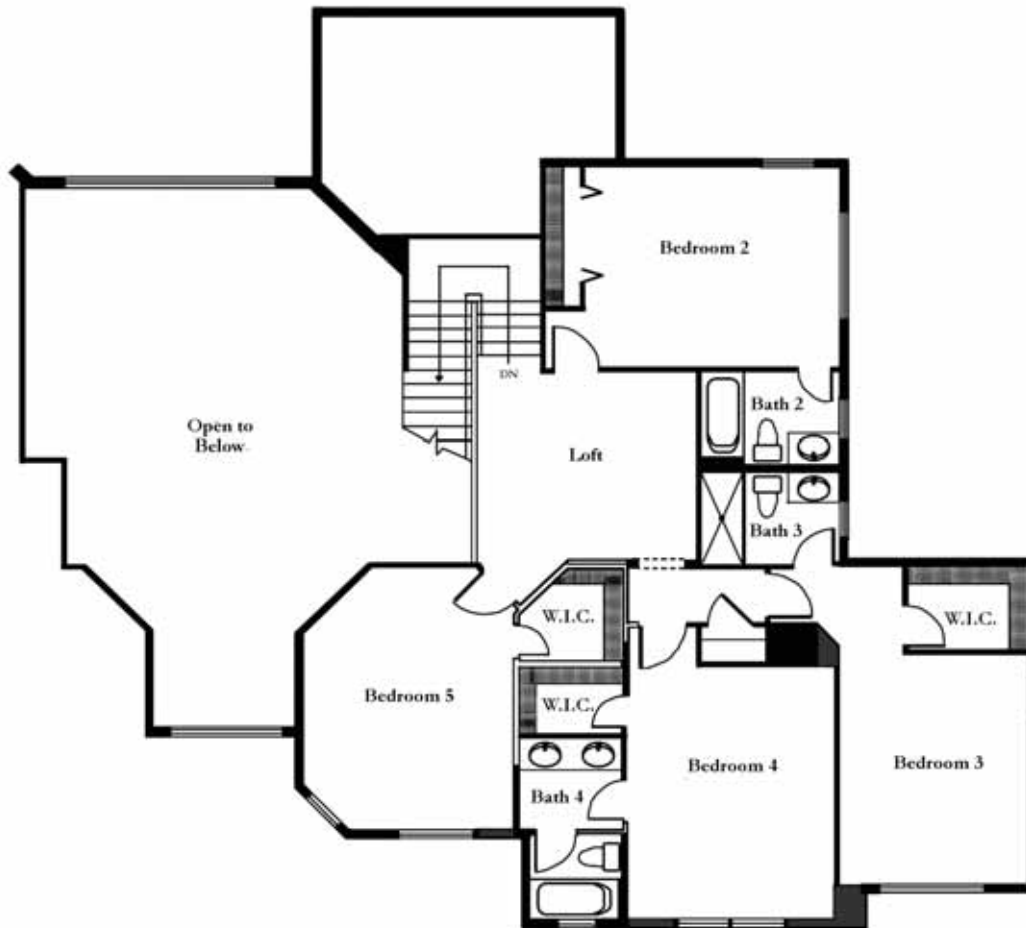
First Floor

INFORMATION BELIEVED ACCURATE BUT NOT WARRANTED

954.752.1986  
[www.floridahomecenter.com](http://www.floridahomecenter.com)



# 2ND FLOOR PLAN



SECOND FLOOR

INFORMATION BELIEVED ACCURATE BUT NOT WARRANTED



954.752.1986  
[www.floridahomecenter.com](http://www.floridahomecenter.com)

**Keyes**  
REAL ESTATE • MORTGAGE • TITLE



# COMMUNITY MAP I

7141 NW 70th Terrace

*Ternbridge*



INFORMATION BELIEVED ACCURATE BUT NOT WARRANTED

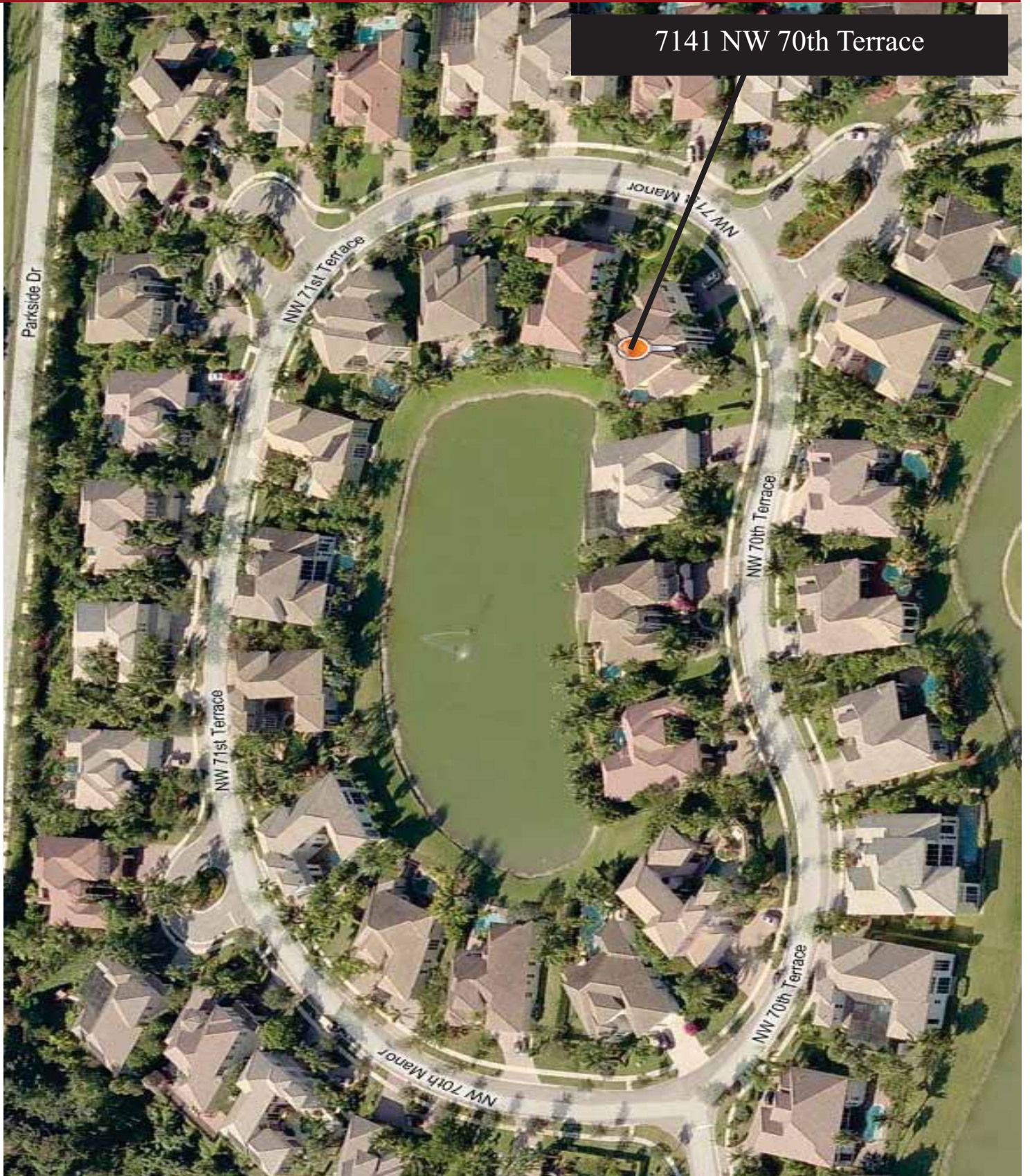


954.752.1986  
[www.floridahomecenter.com](http://www.floridahomecenter.com)



# COMMUNITY MAP II

7141 NW 70th Terrace



INFORMATION BELIEVED ACCURATE BUT NOT WARRANTED



954.752.1986  
[www.floridahomecenter.com](http://www.floridahomecenter.com)

**Keyes**  
REAL ESTATE • MORTGAGE • TITLE