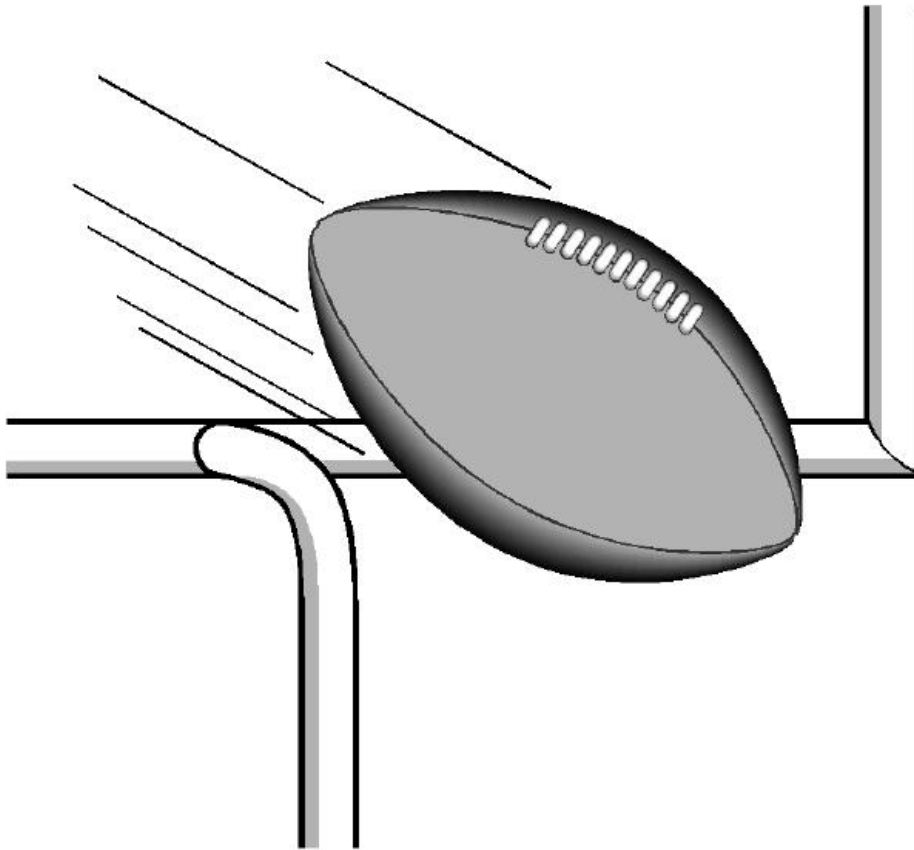


1
2
3
4
5
6
7
8

Jefferson-Shelby
YOUTH FOOTBALL
CONSTITUTIONAL BY-LAWS



9
10

1 **JEFFERSON-SHELBY YOUTH FOOTBALL**
2 **CONSTITUTIONAL BY-LAWS**

3
4 ALL CONSTITUTIONAL BY-LAWS ARE COVERED IN CODE OF ALABAMA 1975
5 VOL. 75 OF TITLE 10. NOT FOR PROFIT CORPORATIONS ARE SUBJECT TO SOME
6 OR ALL OF THE STATUTES OF CODE PERTAINING TO CORPORATIONS,
7 PARTNERSHIPS, AND ASSOCIATIONS.

8
9 **OBJECTIVE**

10
11 THE OBJECTIVE OF JEFFERSON-SHELBY YOUTH FOOTBALL IS TO PROMOTE
12 YOUTH FOOTBALL AMONG THE YOUTH OF JEFFERSON AND SHELBY COUNTIES
13 AND ANY OTHER INTERESTED PARTIES. A YOUTH, FOR THE PURPOSE OF
14 COMPETING IN THIS ASSOCIATION, IS A PERSON WHO QUALIFIES UNDER THE
15 AGE AND WEIGHT RESTRICTIONS HEREINAFTER DEFINED. AN AMATEUR FOR
16 THE SAME PURPOSE, SHALL BE ONE WHO COMPETES, SOLELY FOR THE
17 PLEASURE AND BENEFITS HE/SHE DERIVES THEREFORE: AND WHO DOES NOT
18 MAKE HIS/HER LIVING PLAYING FOOTBALL OR RECEIVE ANY PORTION OF
19 HIS/HER INCOME FROM SAID SOURCE.

20
21 FOR THE REMAINDER OF THIS DOCUMENT, JEFFERSON-SHELBY YOUTH
22 FOOTBALL WILL BE REFERRED TO AS "JSYF" OR "THE LEAGUE." ALL YOUTH
23 FOOTBALL ASSOCIATIONS THAT ARE MEMBERS OF JSYF WILL BE REFERRED TO
24 AS "MEMBERS" OR "MEMBERSHIP".
25

1 **SECTION I – GOVERNMENT**

2
3 **A. BOARD OF DIRECTORS**

4
5 1. General Powers, Number, Tenure and Qualifications. The affairs and business of the
6 corporation shall be under the management and control of the Board of Directors “the
7 Board”; which is comprised of an Executive Board and a Member Board. Each Member
8 Park shall appoint a Park Representative to the JSYF Member Board of Directors. The
9 number of Directors shall be at least three (3).. The initial Board of Directors shall
10 consist of five (5) members. The Board shall set the number of Directors for the
11 following year at its annual meeting. The Executive Board shall be elected at each
12 annual meeting of the Board of Directors, held at the time and place herein below
13 prescribed, and shall hold office until the next succeeding annual meeting of the Board
14 of Directors and until their successors are elected and qualified. Vacancies in the
15 Executive Board may be filled by the affirmative vote of a majority of the remaining
16 Directors, though less than a quorum of the Board of Directors. Vacancies in the
17 Executive Board shall be filled only at a special or annual meeting thereof and those
18 chosen to fill vacancies shall hold office for the unexpired term in respect of which such
19 vacancy occurred.
20

21 Meetings, General. Meetings of the Board of Directors, regular or special, may be held
22 either within or without the State of Alabama at such places as the President may from
23 time to time determine and as authorized by the laws of the State of Alabama. However,
24 meetings shall be held at least once per month.
25

26 Annual Meetings. The annual meeting of the Board of Directors may be provided for by
27 resolution of the Board setting the time and place of such meeting. No further notice of
28 any such annual meeting shall be required, but whatever notice as is desires may be
29 given as directed by the President or Resolution of the Board.
30

31 Regular Meetings. Regular meetings of the Board other than its annual meeting, shall be
32 held once each month provided for by resolution of the board setting the time and place
33 of such meeting. No further notice of any such annual meeting shall be required, but
34 whatever notice as is desires may be given as directed by the President or Resolution of
35 the Board.
36

37 Special Meetings. Special meetings of the Board may be called by the President, on two
38 days notice given to each Director by hand delivered letter, mail, telegram, fax, email or
39 by personal communication either over the telephone or otherwise. Special meetings
40 shall be called by the Secretary in like manner and on like notice, on the written request
41 of one-third of the Directors then in office.
42

43 Contents of Notice. Neither the business to be transacted at, nor the purpose of, any
44 regular or special meeting of the Board need be specified in the notice or waiver of
45 notice of any such meeting, but may be so specified at the discretion of the person
46 calling the meeting.

1
2
3
4
5
6
7
8
9
10
11
12
13
14
15
16
17
18
19
20
21
22
23
24
25
26
27
28
29
30
31
32
33
34
35
36
37
38
39
40
41
42
43
44
45
46

Quorum.

- (a) At all meetings of the Board, a majority of the Directors in office shall be necessary and sufficient to constitute a quorum for the transaction of business, and the act of a majority of the Directors present at any meeting at which there is a quorum shall be the act of the Board of Directors, except as may be otherwise specifically provided by statute or by the Articles of Incorporation of the corporation or these Bylaws. If at any meeting of the Board, there shall be less than a quorum present, a majority of those present may adjourn the meeting from time to time until a quorum is obtained and no further notice thereof need be given other than by announcement at the meeting which shall be so adjourned.
- (b) If a quorum is present, when a meeting is convened, the Directors present may continue to do business, taking action by a vote of the requisite proportion of Directors as fixed above, until adjournment, notwithstanding the withdrawal of enough Directors to leave less than a quorum, or the refusal of any Director present to vote.

Reserved Powers. In addition to the powers and authority by these Bylaws expressly conferred on it, the Board may exercise all powers of the corporation and do all such lawful acts and things necessary and lawful to carry out the purposes of the corporation.

Compensation. The Directors of this corporation shall receive no compensation for their services as Directors. They may however, make payments for such clerical assistants and such professional services, as they deem necessary for the conduct of the affairs of the corporation.

Specific Powers and Duties. Without prejudice to the powers conferred by any other provision of these Bylaws, the Articles of Incorporation or law, the Board shall in addition thereto have the following specific powers and duties:

- (a)
 1. All Board members shall enforce League rules concerning good sportsmanship and conduct. These rules include prohibiting the use of alcohol, tobacco, profanity and harassment of players, coaches, and referees.
 2. All Board members shall have a current copy of league rules and have a general knowledge of those rules.
 3. Each Board member shall be willing to help in areas outside their responsibility, when requested to do so by another Board member.
 4. All Board members shall serve as positive ambassadors to the community.
- (b) From time to time make and change rules and regulations consistent with these Bylaws for the management of the property and business of the corporation.
- (c) To purchase or otherwise acquire for the corporation any property, rights and privileges which the corporation is authorized to acquire, at prices or consideration and generally on such terms and conditions as the Board shall think

1 fit; and at its discretion to pay for the same either wholly or partly in money, or
2 other property or the property of the corporation.

3 (d) To sell, lease, exchange, mortgage, pledge or otherwise dispose of any property
4 of the corporation, including disposition of all or substantially all of the property
5 and assets of the corporation if in the usual and regular course of business, for
6 such price or consideration, and generally on such terms and conditions as the
7 Board thinks fit; and at its discretion to accept in whole or partial payment
8 therefore, money, stock or other securities or properties, provided however, that a
9 sale, lease, exchange, mortgage, pledge or other disposition of all or substantially
10 all of the property and assets, with or without good will, of the corporation not
11 made in the usual and regular course of business shall be upon such terms and
12 conditions and such consideration as may be authorized in the manner prescribed
13 by applicable law , as the same may be amended or altered from time to time.

14 (e) To appoint any person or corporation to accept and hold in trust for the
15 corporation any property belonging to the corporation or in which it is interested,
16 or for any other purpose, and to execute all such deeds and instruments and
17 perform such acts as may be requisite in relation to any such trust.
18

19 2. In affairs of JSYF, each Board of Director's member will have one vote in the
20 appropriate matters of affairs of this League with the exception of the President. The
21 President will have one tie-breaking vote only when needed.
22

23 3. The Executive Board shall consist of 1) President, 2) Vice-President, 3) Commissioner,
24 4) Secretary, 5) Treasurer and 6) Championship Director. These positions will be duly
25 elected at the end of each football season. The football season ends at the completion of
26 the championship games.
27

28 4. The length of term of all officers shall be one year after election and all officers will
29 serve until their successors are elected. This will not apply to Park Representatives.
30 Each Member has the responsibility of electing their own Representative from its
31 association to serve on the Board of Directors. The President of JSYF cannot be an
32 acting Representative from any Member park.
33

34 5. Any elected or appointed officer can be removed from a three-fourths (3/4) vote of the
35 JSYF Board of Directors.
36

37 6. No more than one person from any Member is to serve on the Executive Board if
38 possible.
39

40 7. The Membership of the organization shall hold an annual election for the purpose of
41 electing the Executive Board for the following season. The President will appoint a
42 nominating committee and consist of the following members of JSYF: Two (2)
43 current Board members (excluding the President), and three (3) persons not currently
44 on the Board but currently serving on the Board of a Member park. The nomination
45 committee will accept nominations from the committee and floor. The committee's
46 nominations are treated just as if made by Members from the floor with no vote being

1 taken on accepting or endorsing them. Nominations will be closed at the start of the
2 first scheduled championship game unless so changed by JSYF Board. Whenever
3 possible, no Member park should have more than one person on the nominating
4 committee. This committee will meet by October 15th to begin soliciting
5 nominations for each Executive Board position. A complete list of nominees should
6 be available to all Park Representatives by October 31st.
7

8 An election will be held during the week of the championship games or no later than
9 November 15th. Each active Member of JSYF shall have one vote, and Board
10 members will monitor this. If there is no opponent or protest, then all nominees will
11 be considered officer-elect for that position.
12

13 All Membership votes will be counted at halftime of the last game on championship
14 week. The Secretary and President will be present at the vote count but will not count
15 the votes. The ballots will be counted and two (2) non-Board members will initial
16 tally sheets. The Secretary will be responsible for appointing these two (2) non-
17 Board members. The results will be posted immediately following the counting of the
18 ballots providing there is no protest.
19
20

21 **B. DUTIES OF OFFICERS SHALL BE AS FOLLOWS:**
22

23 **PRESIDENT**

24 The President will be voted on by the Members. The President shall preside over the entire
25 JSYF Board. He/She will act as the official representative of JSYF at all times. He/She shall
26 call all meetings, set the agenda and appoint the following standing committees to act when the
27 Board of Directors shall approve necessary and such committees. Membership, Bowl and
28 Trophy, Rules, By-Laws, Scheduling, Protest, and any other Committees he/she deems
29 necessary.
30

31 **SECRETARY**

32 The Secretary will be voted on by the Members. The Secretary shall keep and maintain a
33 complete and permanent record of minutes of all meetings of JSYF. He/She shall appoint all
34 recorders of committee meetings of JSYF and shall act as record of Rules Committee and By-
35 Laws Committee. He/She shall receive reports from treasurer of all moneys collected. A copy
36 of the minutes shall be given out to the Board of Directors at the next scheduled meeting for
37 approval.
38

39 **TREASURER**

40 The Treasurer will be voted on by the Members. He/She shall pay all bills by check and checks
41 must be signed by him/her and on record at the financial institution representing the President of
42 JSYF. The Board of Directors shall be presented a copy of the financial report at each
43 scheduled Board meeting. The Treasurer is responsible to the league for all financial matters
44 concerning league matters. All expenses will be approved by the Board of Directors.
45

46 **VICE-PRESIDENT**

1 The Vice-President will be voted on by the Members. He/She shall preside over any meetings
2 that the President cannot attend and assist the President as needed..

3
4 **COMMISSIONER**

5 The Commissioner will be voted on by the Members. He/She will be from a Member park. The
6 major duty is to act as the chairperson for the scheduling committee. This position needs to be
7 an individual with free time to assist the President in the day-to-day operations of the
8 association. He/She is responsible for league standings.

9
10 **ASSISTANT COMMISSIONER**

11 The Assistant Commissioner will be voted on by the Members. He/She will be from a Member
12 park. The major duty is to assist the Commissioner and the scheduling committee. This
13 position needs to be an individual with free time to assist the President and Commissioner in the
14 day-to-day operations of the association. He/She is also responsible for league standings.

15
16 **CHAMPIONSHIP DIRECTOR**

17 He/She is committee chair for the play-offs and the Championship games. He/She needs to
18 prepare a budget at the beginning of the year on all cost for the Championship games including
19 (officials, trophies, timekeepers, chains, etc.). This proposal needs to be presented to the Board
20 of Directors in August for approval.

21
22 **C. COMMITTEES:**

23
24 Committees are appointed by the President and approved by the Board of Directors and they are
25 responsible for recommendations and changes. They are to present them to the Board of
26 Directors whenever needed.

27
28 **MEMBERSHIP COMMITTEE**

29 The Membership Committee is responsible to provide a systematic way for increasing
30 membership in this association. To urge associations to enroll teams at the earliest date possible
31 of current year.

32
33 **BOWL/TROPHY COMMITTEE**

34 All JSYF committees are directly involved with JSYF Bowl games. The Bowl/Trophy
35 Committee will be in place by September 1, of the current year. Each of these committees will
36 answer to the Board of Directors of their respective duties. A member from the Bowl
37 Committee shall be present at all play-off games to handle any problems that may occur. This
38 attendee must be neutral and cannot be from a park participating in the game. This committee
39 must present three (3) bids for Bowl Game location and three (3) bids for trophies. These
40 recommendations shall come from the committee and be presented to the Board of Directors.
41 The Championship Director will be chairperson of this committee.

42
43 **BY-LAWS COMMITTEE**

44 May be appointed for future years if necessary.

45
46 **RULES COMMITTEE**

47 May be appointed for future years if necessary.

1
2
3
4
5
6
7
8
9
10
11
12
13
14
15
16
17
18
19
20
21
22
23
24
25
26
27
28
29
30
31
32
33
34
35
36
37
38
39
40
41
42
43
44
45
46

PROTEST COMMITTEE

The Protest Committee shall make sure a protest has been written up correctly before it is presented to the Exectutive Board so a decision can be made.

SCHEDULING COMMITTEE

The Scheduling Committee will schedule all games that are played in the league. This committee will maintain control and responsibility of all game schedules throughout the year. No changes can be made without going through the scheduling committee. The Commissioner will act as chairperson for this committee with the assistance of the Assistant Commissioner.

ADVISORY COMMITTEE OF PAST JSYF BOARD MEMBERS

The Advisory Committee of Past JSYF Board Members does not have voting rights. This committee gives input to the new JSYF officers on previous situations that arose in the past and advise on what action was taken.

D. ORDER OF BUSINESS

- Roll Call
- Reading and approval of last meeting’s minutes
- Treasurer’s Report
- Committee Reports
 - a. Vice-President
 - b. Commissioner
 - c. Officials
 - d. By-Laws
 - e. Rules
 - f. Protest
- Discussion of Old Business
- Introduction and Discussion of New Business
- Special Announcements from Members
- General Business
- Agenda for Next Meeting
- Adjournment

E. MEETINGS

- 1 1. The President of JSYF will schedule all meetings pertaining to any business of or for this
2 association
- 3
- 4 2. JSYF Board meetings are to be held at minimum once each month during the regular
5 playing season (August 1 through November 30) and once each month during the off
6 seasons by the Member parks if necessary.
- 7
- 8 3. Each Member is responsible to have a Representative present at each meeting. If the
9 elected Representative is not able to attend, the Member's President/Director may have
10 an alternate attend. The Member's President/Director is at all times welcome and
11 encouraged to attend. **If a Member misses a (one) meeting without a prior notice and
12 a valid excuse a \$50.00 fine will be imposed.**
- 13
- 14 4. All JSYF meetings must have a motion from the floor and a second before a meeting
15 adjourns.
- 16
- 17 5. If an attendee becomes unruly, the JSYF President has the authority to ask the
18 attendee(s) to be dismissed from said meeting. Any dismissed attendee(s) must
19 apologize to the other attendees before admission back to the next scheduled meeting.
20
- 21 6. A quorum shall consist of 51% of the Board of Directors. A quorum is required to be
22 present at regular scheduled meetings. If a special meeting is called, each Member park
23 shall be given two (2) days advance notice to prepare and discuss the special situation.
24
- 25 7. All meetings are closed to outsiders except for Member Presidents/Directors, and their
26 Representatives. Any time a coach from one of the Members has an issue they feel
27 needs to be presented to the Executive Board, they may schedule an appointment to
28 present their case. At no time will matters brought to the JSYF Executive Board, be
29 discussed outside the JSYF meeting. All information concerning a Member should be
30 relayed to their respective Park Board. When conflicts arise between two of the
31 Members, both parties will be given an opportunity to come before the JSYF Executive
32 Board for discussion. After the parties have an opportunity to present their side of the
33 conflict in discussion, they will be asked to leave the meeting.
- 34

35 *If a conflict resolution needs to be made by the JSYF Board, one will be made at that time.*

36
37 **F. CONSTITUTIONAL AMENDMENT**

- 38
- 39 1. These articles of the JSYF Constitution and By-Laws may be added to or amended by
40 two-thirds (2/3) majority of the Member Board of Directors present at any general
41 meeting of JSYF. Revisions to these articles may be proposed and voted on by the
42 Member Board of Directors between the months of November and May. Any/all
43 revisions will be voted at the next JSYF meeting at least thirty days after the initial
44 proposal. This time frame will allow the Membership an opportunity to review the
45 proposals with the Officers of their Youth Associations. Any additions or revisions to
46 the articles of the JSYF Constitution and By-Laws will become effective at the time of

- 1 change voted on by the Member Board of Directors. There will be no revisions or
2 additions to the JSYF Constitution or By-laws after the month of May preceding the start
3 of the current year's season.
4
- 5 2. All amendments concerning Players, Game Officials, Coaches, League Members or
6 Spectators safety shall be made to the JSYF Constitution and By-Laws only at a regular
7 scheduled meeting. All amendments require two-thirds (2/3) vote of the Member Board
8 of Directors. A quorum of 51% of the Member Board of Directors must be present to
9 even consider the change for safety concerns. If approved by two-third (2/3) vote of the
10 Member Board of Directors, a rule on safety will become effective immediately.
11
- 12 3. A quorum will be required to vote on issues of "immediate attention" at any meeting.
13 The Board of Directors will determine "immediate attention".
14
- 15 4. All proposed amendments must be written and presented to the prospected committees
16 so they may bring it to the Board of Directors to be voted on in the next regular meeting.
17

18 **SECTION II – MEMBERSHIP**

19 **A. PARK MEMBERSHIP**

- 20
- 21
- 22 1. The Membership of JSYF shall consist of players on teams from parks recognized in
23 good standing. Hereinafter defined: "A team shall consist of a group of players
24 organized for the purpose of competing in Jefferson-Shelby Youth Football (JSYF). The
25 Member has paid its said entrance fee on the terms outlined in the Constitution and is
26 certified by the other Members.
27
- 28 2. There will be no restriction as to race, sex, color or creed for the purpose of
29 Membership. However, any new organization wishing to participate must be approved.
30 A three-fourth (3/4) vote of the Member Board of Directors is necessary for a new
31 Member to be approved and admitted to JSYF. If approved, Membership will be "at
32 will" and can be revoked without cause with a three-fourth (3/4) vote of the Member
33 Board of Directors. The new Member will be on probation for a period not to extend past
34 two years from the date of approval. During the probationary period, the new park will
35 not be allowed to vote on any issue.
36
- 37 3. The entry fee for each Member will be \$500.00. Such fee will be due and payable
38 before February 1 of the current year. If entry fee is not received, the association will
39 not be allowed to participate in the JSYF for the current year. There will be no
40 exceptions to this rule. Designated fees and fines not paid within a fourteen (14) day
41 period from the date of assessment will forfeit voting rights of this association until paid
42 in full. There will be an additional penalty of 20% added every fourteen (14) days,
43 unless waived by the Board of Directors.
44
- 45 4. Member registration shall be concluded when the \$500.00 entry fee is paid. The
46 Member shall remain a Member of JSYF for a period of one year at a time. Members

- 1 shall be renewed each year with the paying of the JSYF dues provided that the
2 concurring park abides by the rules of this association and remaining in good standing.
3
- 4 5. Any Member's Representative may be held in "not good standing" with JSYF. If the
5 individual is found not in good standing with JSYF, the affected Member's
6 President/Director will be notified at the earliest time. The affected Member will, as
7 soon as practical, replace the Representative and notify the Secretary of JSYF.
8
 - 9 6. At the beginning of each year each park will furnish the Secretary of JSYF, a complete
10 list of their parks board including phone numbers
11
 - 12 7. For the mutual protection of all teams entered, to insure fulfillment of schedules and
13 right conduct on the part of players and coaches of all teams no entry fee will be
14 refunded.
15
 - 16 8. In order for a player to be eligible to participate at the Cahaba Valley (Briarwood)
17 Member park, the child must be enrolled in the Briarwood School system for the current
18 year. In addition, a child enrolled at the Oak Mountain Classical School for the current
19 year will also be eligible to participate at the Cahaba Valley (Briarwood) Member park
20 without requiring a release from the Member park in which the player is zoned.
21

22 **B. FINES AND PENALTIES**

23
24 Any Member or person proven guilty of a violation of the rules of play or Membership will be
25 subject to disciplinary action. Depending on the violation(s), fines, penalties, forfeitures and/or
26 probation will be determined by the Executive Board . If a Member is dismissed from JSYF for
27 any reason and would like to rejoin, all fines must be paid in full and the Member will be on
28 probation for one year.
29

30 **C. REGISTRATION OF TEAMS AND PLAYERS**

- 31
32 1. Any child wishing to participate in JSYF must present a birth certificate at time of
33 his/her initial (the first time) certification to prove age.
34
- 35 2. Participants who have been on a certified roster during the previous season will not be
36 required to provide a birth certificate or proof of residence. However, new participants
37 and/or participants desiring to be re-certified after an absence of one or more years from
38 any JSYF Member park team must provide a photo copy of a valid birth certificate and
39 proof of residence. Proof of residence must be in the form of a photo copy of a current
40 utility bill (electricity, natural gas, water) displaying the participant's and their legal
41 guardian's current street address. JSYF will only be responsible for maintaining the
42 current and previous year's certification records. Proof of residence must comply with
43 current JSYF Community Play Rule guidelines.
44
- 45 3. The Board of Directors will set time and date for certification.
46

1 4. All Members must have official JSYF rosters completed by certification date set by the
2 Board of Directors.

3
4 5. Member's teams that have fewer than 18 players on their roster at any time and pick up a
5 new player must have the player certified. This can only be done with a birth certificate
6 and official weigh in must be with a JSYF Officer or a Park Representative that is not
7 associated with the player that is being certified. Exceptions to this rule:

- 8
9 i. A player that was written or typed on a specific teams' roster at the
10 official JSYF Certification, but was not certified because he/she was not
11 able to make their teams' maximum weight for the division at the weigh
12 in will not be eligible to be added for that team. This player will only be
13 eligible to move to a team in a higher weight division for their Home park
14 provided that there is an available team in that division that has fewer than
15 18 players on their roster.

16
17 The Commissioner should initial the certificate and sign the back of the roster
18 with his name, Member and the date. He then will notify the other Board of
19 Directors at the next JSYF meeting or by e-mail or fax communication.

20
21 6. Any player added to a roster that's over the regular limit after final certification must be
22 approved by the Board of Directors and must be signed before it is approved. This must
23 be completed before the child can play. Players can only be added up to the last regular
24 season game.

25
26 7. Certification shall be accomplished by the Board of Directors and they will have the
27 final approval.

28
29 8. Any exceptions to player certification must have the approval of the Board of Directors.

30
31 9. Each team is required to have an announcement roster for every game of the season
32 showing player name and jersey number.

33
34 10. Each Member Park will submit a preliminary team registration at June's meeting to help
35 Members make informed decisions on team splits within their own Member Park.

36
37 11. If 40 or more players have registered to play for a given weight class, the Member Park
38 shall split the players into two teams. The method in which the Member Park chooses to
39 split the team is up to the Member Park.

40
41 *The penalty of failure of providing an announcement roster could result in a forfeiture of the*
42 *game as determined by the Board of Directors.*

43
44 **D. OFFICIAL WEIGH-IN**

45
46 JSYF works under the mandatory weigh-in policy prior to the first week of the season.

1
2
3
4
5
6
7
8
9
10
11
12
13
14
15
16
17
18
19
20
21
22
23
24
25
26
27
28
29
30
31
32
33
34
35
36
37
38
39
40
41
42
43

1. The Board of Directors is required to have accurate medical scales and a certified 50 lb weight at the weigh-in site. These should be good operation scales. For example, a scale that loses calibration when two or three children get on or off would not be considered in good operation. These scales must be in an enclosed weigh-in facility so the children can undress, if necessary. If there is a female player involved, a mother from each Member's team will be present at weigh-in and everyone else must leave.
2. Official weigh-in will take place on the third (3rd) Saturday in August prior to the start of the current season at a time and location to be established by the JSYF Board.
3. Each player will be allowed to weigh-in one (1) time, without exception. The player, their parent/guardian and/or coach will determine what attire each individual player will wear for weigh-in in advance of the player stepping onto the scales. The player must wear, at a minimum, appropriate athletic shorts and if the player is female, an appropriate T-shirt. JSYF ignores all digits to the right of the decimal on a digital scale. This in effect gives each player a 15-ounce clothing allowance.
4. There is to be **NO** weight loss measures (running, jogging, exercising, drugs etc.) taken at time of certification or at the certification site. Anyone doing so will be asked to leave the premises. Coaches conducting such activity at certification site will face disciplinary action from the JSYF Board. The JSYF Board will not condone, authorize, nor encourage the use of drugs, starvation diets, or any other immediate weight loss gimmick.
5. A player whose weight exceeds the maximum weight limit set for their age appropriate division will be allowed the opportunity to make weight a second time for their age appropriate division at a time and place specified by the board. If the player's weight still exceeds the maximum weight limit set for their age appropriate division the player will be allowed to move up one higher division providing the player can make the maximum weight limit for that division.
6. Any player who does not complete the weigh-in/certification process will not be allowed to participate in any JSYF sponsored game/event.
7. The JSYF Board reserves the right to establish an additional date to weigh-in for participants with "special circumstances". The date and requirements to qualify as "special circumstances" for this additional weigh-in will be communicated to Member parks by the Board prior to the start of the official weigh-in set out above.
8. A Member's Representative and coach and one weigh-in witness from another park will conduct official weigh-in. Unless stated previously, all others will not be allowed in the weigh-in area.
9. Once a child weighs in and makes weight, he may not be asked or forced to weigh in again.

1 10. Each team is responsible for having their official JSYF certified team roster present at
2 games. If there is any question about a player's eligibility (roster wise) to play the game,
3 contact your Member's Representative. If it is determined by the JSYF Executive Board
4 that an ineligible player has participated, the team he/she played on will automatically
5 forfeit all of the effected games.
6

7 *Failure to adhere to the JSYF weigh in procedures will result in the player being declared*
8 *ineligible for the entire season.*
9

10 **E. COMPOSITION OF WEIGHT CLASSES**

11
12 1. Each Member must have at least one team in three different weight classes (exceptions
13 need Board of Director's approval).
14

15 2. If a weight class has more than 8 teams, JSYF will have the option of dividing the teams
16 in two divisions. They will be called the American League and the National League. If
17 there are two (2) teams from the same park, the first team drawn will be in one division
18 and the other will automatically be in the other. There will be a winner in each division.
19 The Championship game will be played between division winners before Thanksgiving
20 Day each year,
21

22 3. In division play there will be NO ties. Overtime period will be played to break the tie.
23

24 4. The various weight classes will be formed as follows
25

26 Jr.1 (70 lbs.) – Teams for players who are 5 & 6. Players cannot be 7 years old before May 1 of
27 the current year. Players who turn 7 between May 1 and August 31 must be in 1st Grade.
28 Players must weigh-in at 70.9 lbs or less to be considered an “Unrestricted Player”. All players
29 weighing between 71 and 80.9 lbs. will be considered a “Restricted Player” (see Restricted
30 Player rules).
31

32 Jr.2 (80 lbs.) – Teams for players who are 6 & 7. Players cannot be 8 years old before May 1 of
33 the current year. Players who turn 8 between May 1 and August 31 must be in 2nd Grade.
34 Players must weigh-in at 80.9 lbs or less to be considered an “Unrestricted Player”. All players
35 weighing between 81 and 90.9 lbs. will be considered a “Restricted Player” (see Restricted
36 Player rules).
37

38 Jr.3 (90 lbs.) - Teams for players who are 7 & 8. Players cannot be 9 years old before May 1 of
39 the current year. Players who turn 9 between May 1 and August 31 must be in 3rd Grade.
40 Players must weigh-in at 90.9 lbs or less to be considered an “Unrestricted Player”. All players
41 weighing between 91 and 100.9 lbs. will be considered a “Restricted Player” (see Restricted
42 Player rules).
43

44 Jr.4 (105 lbs.) - Teams for players who are 8 & 9. Players cannot be 10 years old before May 1
45 of the current year. Players who turn 10 between May 1 and August 31 must be in 4th Grade.
46 Players must weigh-in at 105.9 lbs or less to be considered an “Unrestricted Player”. All

1 players weighing between 106 and 115.9 lbs. will be considered a “Restricted Player” (see
2 Restricted Player rules).

3
4
5
6
7 Sr.1 (120 lbs.) - Teams for players who are 9 & 10. Players cannot be 11 years old before May
8 1 of the current year. Players who turn 11 between May 1 and August 31 must be in 5th Grade.
9 Players must weigh-in at 120.9 lbs or less to be considered an “Unrestricted Player”. All
10 players weighing between 121 and 135.9 lbs. will be considered a “Restricted Player” (see
11 Restricted Player rules).

12
13 Sr.2 (130 lbs.) - Teams for players who are 10, 11, and 6th Grade 12 year olds. Players cannot
14 be 12 years old before May 1 of the current year. **Players that turn 12 after December 31 and**
15 **before May 1 of the current year will be allowed to play provided the player was on a**
16 **Certified JSYFL roster for the previous season.** Players must weigh-in at 130.9 lbs or less to
17 be considered an “Unrestricted Player”. All players weighing between 131 and 150.9 lbs. will
18 be considered a “Restricted Player” (see Restricted Player rules).

19
20
21 RESTRICTED PLAYER RULES

22
23 “Restricted Players” must play on the offensive or defensive line between the tackles in a down
24 position and may NOT play on special teams.

25
26 All “Restricted players” will be subject to a second weigh-in which shall be completed after the
27 end of the regular season and prior to the commencement of the play-offs subject to the official
28 weigh-in rules of the JSYFL. Any “Restricted Player” who weighs more than allowed at the
29 second weigh-in, will be ineligible to compete for that Park during any play-off game. See
30 weight chart below for Restricted player weight allowances.

31

| <u>Division</u> | <u>First Weight</u> | <u>Playoff Weigh Limit</u> |
|-----------------|---------------------|----------------------------|
| 32 First Grade | 80.9 | 85.9 |
| 33 Second Grade | 90.9 | 95.9 |
| 34 Third Grade | 100.9 | 105.9 |
| 35 Fourth Grade | 115.9 | 120.9 |
| 36 Fifth Grade | 135.9 | 145.9 |
| 37 Sixth Grade | 150.9 | 160.9 |

38
39
40 “Restricted” players will have a small dot located on the helmet and will be notated on the
41 official roster for easy identification.

42
43 “Restricted” players can only play for a Park if one of the following two
44 conditions are met:

- 45
46 A) “Restricted” player lives within said parks city limits
47 Or B) “Restricted” player has already been certified for said Park in the past.

1
2 If any player certified as a “Restricted Player” is found to have participated in a game at a
3 position outside of the “tackle to tackle” designation or does not meet one of the above rules,
4 this will be considered a violation that will result in a forfeiture of any and all games where the
5 violation occurred. In addition to forfeiture of games there may also be a monetary penalty
6 assessed to the Park whose team violates “Restricted Player Rules”.

7
8 NO Player can play up a grade level unless approved by the JSYFL Board of Directors/
9

10
11 In all divisions, no player will be eligible who is in 7th grade or higher classification for the
12 current year.

13 **SECTION III – GOVERNING RULES**

14 **A. BALL ADOPTION**

- 15
16
17
18 1. A Wilson K2 –18” circumference football or equal suitable substitution will be the
19 authorized football for the Junior Teams (JR 1-2-3). Any park wishing to use a ball
20 other than the Wilson K2 must have the substitute ball approved by the JSYF Board
21 prior to the beginning of the current playing season (August 1st).
22
23 2. A Wilson TDJ or equal suitable substitution will be the only authorized football for the
24 Senior Teams (SR 1-2-3). Any park wishing to use a ball other than the Wilson TDJ
25 must have the substitute ball approved by the JSYF Board prior to the beginning of the
26 current playing season (August 1st).
27

28 **B. EQUIPMENT**

- 29
30 1. Fundamental equipment is the responsibility of the Members. JSYF encourages all
31 Members to provide each player with the safest equipment available. The game officials
32 can stop a player from playing any time for unsafe equipment.
33
34 2. All team jerseys must be numbered front and back. Scheduling Committee should
35 review each team color and notify each team if there is a conflict apparent. Any
36 Member buying new jerseys of a different color than the previous must obtain Board
37 approval
38
39 3. Tennis shoes or athletic shoes with molded cleats or rubber may be used. No detachable
40 cleats of any kind may be used. No metal cleats are permitted.
41
42 4. ALL mouthpieces will be attached to helmet, except for orthodontic mouthpieces for
43 kids with braces.
44
45 5. Use of electric devices shall not be allowed between spotters or any anyone on the field.
46 Electrical devices including cell phone, two way radios and head sets. Electrical devices

1 do not include digital beepers. A violation of this rule could result in an automatic
2 forfeiture of the game in question.
3

- 4 6. Games may be filmed only if the Home Team allows. Permission to film a game by the
5 Visiting Team participating in the contest should not be unreasonably held by the Home
6 Team.
7

8 JSYF scheduled games, regular season or playoff, may not be filmed by coaches, family
9 members, or players of non-game participants. During the current football season, if a
10 coach, family member, or player of a team from a Member park or from a team that is
11 not participating in the game violates this rule, the Member park will be fined \$500.00
12 and the Head Coach of the team will be suspended for his/her next game. The Head
13 Coach of the offending team will not be allowed to return to the sideline as a coach for
14 any team in JSYF league scheduled game until the fine is paid by the Member park.
15 This would also run concurrent with future JSYF football seasons.
16

17 **C. GOVERNING RULES OF PLAY:** 18

19 Games are governed by the official football rules of the Alabama State High School Athletic
20 Association and rules and regulation set forth in this Constitution and By-Laws with the
21 exception of the following:
22

- 23 1. There will be only six (6) coaches on the field at any time. The only extra people on the
24 field will be a ball boy, or two (2) if needed and medical personnel
25
- 26 2. During an official called water break, the coach can go to the team to make sure all
27 players get water. The maximum number of coaches on the field at any time is two (2).
28
- 29 3. During game time outs, coaches may pull teams to the sidelines. During a game time
30 out, the players are not allowed to go off the field. If so, this is considered an illegal
31 substitution. During a game time out, more than one coach is allowed to talk to the
32 players. During a game time out only two (2) coaches are allowed to go onto the field to
33 talk with the players. After the whistle is blown, teams have 25 seconds to put the ball
34 back in play.
35
- 36 4. Any coach found hiding a player or in any other way making his/her players unavailable
37 will be subject to discipline by the Executive Board.
38
- 39 5. The Game Referees will be responsible for:
40
- 41 a) Checking the game ball to see if they conform to the JSYF football rules.
 - 42 b) To turn into the Executive Board the name of any coach showing
43 unsportsmanlike conduct.
 - 44 c) To be conversant of all rules of play and the rules of JSYF.
 - 45 d) Turn into the Executive Board the names of any coaches or players ejected from
46 game and reasons
47

- 1 6. Games are not officially over until all 4 full quarters are played unless both head coach's
2 agree otherwise.
3
- 4 7. All games that are cancelled for any reason must be played within that week at least by
5 Saturday. Failure to reschedule during this time frame could result in a forfeit for both
6 teams. All teams must play their division games. The only exception to move a game to
7 a later date is for school activities. A school activity must be documented in writing by
8 the school and presented to the Board of Directors. Games postponed due to inclement
9 weather should be made up as soon as possible. There will no exception to this rule. If
10 there is a problem with any of these rules, they will be addressed to the Board of
11 Directors.
12
- 13 8. Tiebreakers will only be in effect for all games.
14
- 15 9. Game officials will make time available to answer questions from the head coach as long
16 as the coach maintains his/her composure and tone of voice.
17
- 18 10. A one (1)-point conversion from the two (2) yard line will be used, if run or passed.
19
- 20 11. A two (2) point conversion from the four (4) yard line will be used, if run or passed
21
- 22 12. A two (2) point conversion will be awarded from a kick from the two (2) yard line
23
- 24 13. A team cannot break a huddle with more than 11 people.
25
- 26 14. The center is allowed to snap the ball either straight or sideways as long as it is done
27 between the legs.
28
- 29 15. All Junior games cannot have a nose tackle within 2 yards of the line of scrimmage and
30 no one may line up inside the offensive guard. This means you may not line up in the
31 center/guard gap, with the guard having a maximum split of 1 foot. This rule is for the
32 safety of the young centers. If a team lines up within this zone, the play will be blown
33 dead and the referee will warn the offending team's coach. A subsequent violation will
34 result in the play blown dead and a 5 yard illegal procedure penalty.
35
- 36 16. No player in any weight class may jump over the center.
37
- 38 17. Initial hit may not be to the head in any weight class.
39
- 40 18. All Senior games are allowed to have a nose tackle; however, they must play down in a
41 4-point stance or a 3-point stance and not standing up over the Center for a distance of 1
42 yard. If a noseguard is in a standing position directly over the center, the play will be
43 blown dead and will result in a 5 yard illegal procedure penalty.
44

- 1 19. If there is a point difference at any time of 28 points, the time clock will go “hot” and
2 stay hot for the remainder of the game, regardless if a team cuts the deficit to less than
3 28 points. Hot Clock will stop for time outs and injury.
4

5 **D. PENALTIES**
6

- 7 1. Five (5) and Ten (10) yard penalties will be observed on the 80 yard field.
8
9 2. All other penalties are in accordance with the Alabama High School Association.
10

11 **E. PROCEDURE AND PLAY**
12

- 13 1. The Scheduling Committee will establish a schedule that will consist of no more than
14 eight (8) regular season games for each team in each division. The Committee should
15 schedule all regular season games so that Member parks have equal numbers of games
16 played in their home park to those considered away games. In creating the schedule, the
17 Committee will take into consideration the number of teams a specific Member park will
18 have in each division, home field availability, and potential black out dates each of
19 which may impact the ability to keep home and away games equal.
20

21 The Committee may have to insert the tiebreaker game or the three-way
22 tiebreaker scenario immediately after the regular season has concluded to determine
23 those teams that will advance to the playoffs.
24

25 At the conclusion of the regular season, there will be one play-off round game and one
26 championship game per division.
27

- 28 2. All games will be played on fields specified by the schedule committee and approved by
29 the Board of Directors.
30
31 3. All teams will play on 80 yard by 40-yard field minimum; 80 yard by 160-foot
32 regulation field is acceptable.
33
34 4. There will be no obstruction within 10 feet of the sideline or end zones, preferable all
35 games will be played in an enclosed park.
36
37 5. All parks will have goal post in regular season and post season play. If a park does not,
38 they will not have any home games without approval of the Board of Directors.
39
40 6. Teams will be scheduled in their or their opponent’s park. For home games, a nominal
41 admission fee may be charged, not to exceed \$4.00 for adults, \$2.00 for children (under
42 12). This charge is not applicable for persons in possession of an official JSYF badge.
43
44 7. All parks are responsible for a player’s box from the 30-yard line to the 30-yard line for
45 each team’s players. No player will be allowed past the 30-yard line on the sideline. All
46 players must remain in this box during the game.

1
2
3
4
5
6
7
8
9
10
11
12
13
14
15
16
17
18
19
20
21
22
23
24
25
26
27
28
29
30
31
32
33
34
35
36
37
38
39
40
41
42
43
44
45
46

8. All parks are responsible for coach’s box from the 20-yard line to the 20-yard line for the coaches. This box should be located in front of the player’s box.

8. Two (2) offense and two (2) defense coach can be on the field with the 70 lb. players. One (1) offense and one (1) defense coach can stay on the field with the 80 lb. Players. If a coach (either offense or defense) is on the field coaching after the play has started, he/she will be warned one (1) time. After the next time, he/she will automatically be removed from the field and be replaced with another coach.

9. If any Coach, head or assistant, is ejected from a game they must immediately cease to participate in the game, and leave the football complex.

If an assistant coach is ejected from the game, a one game suspension penalty applies.

Ejected coaches will automatically forfeit their right to participate in the next league game. Any coach who continues to be argumentative, or threatens another league representative or official after being ejected, will face automatic suspension from the league. Suspended coaches can only be reinstated with majority approval by the Executive Board .

11. The head coach is at all times responsible for the actions of his/her players, coaches and fans.

12. Coaches, parents, players and anyone else using profanity or showing threatening actions before, during or after any league function will be suspended by the Executive Board. Anyone involved in an altercation of physical violence will be placed in “not good standing” with JSYF and not allowed in or around any Member’s park.

13. There is no excuse for anyone making a threat or threats. JSYF will not tolerate this behavior.

14. Player Ejections

First offense

An ejected player will be required to sit out the equivalent of one full game. Thus, a player ejected in the 1st half of a game would be required to sit out the 2nd half of the current game, plus the 1st half of the next league game. A player ejected in the 2nd half of the game would be required to sit out the next league game (both halves).

Second offense

The penalty for a second ejection during one season will be forfeiture of participation in the current game, plus the next full game (both halves). Any additional ejections will be grounds for immediate dismissal from the league.

1
2 Any protest regarding ejections will be considered by the Executive Board.
3

- 4 15. The play clock for the 70, 80 and 90 pound divisions is 35 seconds. The play clock for
5 the 105, 120, and 130 pound divisions is 25 seconds.
6

7 **F. KICKING**
8

9 Kick-Offs
10

- 11 1. 70's and 80's start on the 25-yard line, with the exception of a "safety". The team
12 receiving the football after a "safety" will receive the ball on their 35-yard line.
13
14 2. All other weight classes kick off from the 30-yard line and receiving team lines up on
15 the 40-yard line.
16
17 3. If a ball is kicked off into the end zone it is considered a dead ball it may not be
18 advanced and is to be spotted on the 15-yard line.
19
20 4. If the ball is kicked out of bounds, the receiving team will have the option of assessing a
21 5 yard penalty and re-kicking; or spotting the ball on their own 35 yard line.
22

23 Punting
24

- 25 1. Any weight class may call for a punt and walk off 30 yards anywhere on the field;
26 however, walk off will never take the ball deeper than the 10-yard line. Example: If you
27 call for a punt when you are on the opponent's 30 yard line you will only get a 20 yard
28 walk off to their 10 yard line. (adopted 2/24/2008)
29
30 2. At the moment a team declares "punt"; in order to simulate the punt play, 10 seconds
31 shall run off of the clock and the clock will not restart until the next snap of the ball.
32
33 3. 70's and 80's will not be allowed to kick punts all other weight classes may kick or call
34 for a walk off.
35

36 **G. GAME TIME**
37

- 38 1. All teams entering this association must play at the time and place scheduled by the
39 scheduling committee.
40
41 2. Games will be played on Monday, Tuesday and Thursday nights starting at 6:00p.m. and
42 7:15 p.m. Rained out games will be played at the time and place scheduled as soon as
43 possible, to be decided by the home park representative with approval of commissioner.
44 All single games will be played at 6:30 p.m. All Jamboree games will be played after
45 3:00 pm to avoid heat related injuries to players.
46

- 1 3. Teams scheduled for a game must be ready to play at the scheduled time. This includes
2 dressing and warming up.
3
- 4 4. All Sr. games will be 10-minute quarters by the clock (stop clock). Clock will be kept in
5 accordance with the Alabama High School Football Rules. If no timekeeper is available,
6 the game officials will keep the time on the field. Time between halves will be 8
7 minutes and between ball games 10 minutes.
8
- 9 5. All Jr. games will play 8-minute stop clock, kept in accordance with the Alabama High
10 School Football Rules.
11
- 12 6. The Game officials have the option only to delay a game. If lightning occurs before the
13 first scheduled game, there will be a 30-minute waiting period from the original start
14 time before the game may be postponed. If lightning occurs before the second scheduled
15 game, there will be a 30-minute waiting period from the original start time or end of the
16 first game before the game may be postponed. The home field Member's
17 President/Director or Representative or JSYF Representative plus a coach must agree to
18 call off the game. The Home field President/Director or Vice President/Assistant
19 Director can stop or postpone a game due to inclement weather to preserve the playing
20 surface at any time.
21
- 22 7. If a game must be stopped during play for any reason it must be restarted where it was
23 stopped. The official scorekeeper just takes record of: score, time remaining, quarter,
24 where the ball is marked, what down and who has possession of the ball.
25
- 26 8. League games will take precedence. Teams in JSYF shall be allowed to play outside
27 this League; at no time will non-League games interfere with JSYF functions or play.
28 (This includes pre-season and post-season play.)
29

30 **H. PARKS**

- 31
- 32 1. JSYF will not dictate to the individual parks on how to run their programs, as long as
33 they abide by the rules of this constitution and by-laws of JSYF.
34
- 35 2. Any park talking to or considering talking to another league will have the courtesy of
36 notifying the President of JSYF as soon as possible.
37
- 38 3. JSYF plays under the rules of the AHSAA. Within these rules are sub rules that each
39 Member has to abide by.
40
- 41 4. All parks will allow the Member parks to enter their park for unstated reasons. (This
42 includes any member of the Executive Board.)
43

44 **I. COMMUNITY PLAY RULE**

1 1. In community play, the public high school zone in which the player resides will define the
2 Member park community. All players must play for the member park community that is zoned
3 for the High School that the player will attend. The following exceptions will apply:
4

5 A. If 2 or more municipalities are served by a single high school then the player must play for
6 the member park of the municipality that they live in unless that municipality does not have a
7 park and then they must play with the other municipality that is zoned for their high school.
8

9 B. Special consideration is afforded private schools. At the discretion of the JSYF Member
10 Board of Directors, a private school may be delineated as a Member park community. Attendees
11 of the private school may choose to play within the private school Member park community or
12 the public high school zoned community in which they reside.
13

14 C. If one Member Park community serves 2 or more high schools then the players within that
15 park MUST be placed on teams according to which high school they are zoned to attend. There
16 will be no exceptions to this rule.
17

18 2. If a first year player wants to play outside his/her "Community Park", he/she must get a
19 written release from the park and the JSYFL board must approve ahead of time otherwise the
20 player will not be certified to play for the park outside of their "Community Park". Note: There
21 must be valid reasons to play outside of your "Community Park" for it to be allowed.
22

23 3. Any player who has been certified by JSYFL to play within a park must continue to play in
24 that park unless he/she has moved into another area. At that time the family must decide to
25 either keep the player in the park they were originally certified for in JSYFL or to start playing
26 for the member park area in which they currently reside. (Ex: Player certified to play for Pelham
27 must continue to play in that park except when either school zone or residence has changed.
28 Otherwise the player can play ONLY for Pelham. When school zone and/or residence has
29 changed then the family can change parks or stay with the park where they were certified
30 originally)
31

32 4. In the first active year of a new Member park, players living in the "New Park" community
33 may choose to play for the "New Park" community or the park they have been previously
34 certified to play in under JSYFL rules. They must still provide proof of residency again to play
35 with the "New Park" to maintain that they still live within that community. If a player chooses
36 not to play for the "New Park" in the first year, then they will be required to get a written release
37 from the current park after the first year. (EX: Spain Park kid does NOT play for Spain Park
38 during the 2011 season which would be Spain Park's first year, but continues to play for Oak
39 Mountain. If the player decides they want to go play for Spain Park during the 2012 season then
40 they must obtain a written release from Oak Mountain to do so.)
41

42 5. It is the total responsibility of Members to make sure all players are legal and conform to the
43 community play rule. If a child is caught playing out of his community without a written release
44 form, then all games previously played for that team will be forfeited.
45

46 6. All players in JSYFL must live within JSYFL school zones or attend schools zoned for the
47 high schools in JSYFL communities unless certified prior to the 2011 certification. Those

1 schools are as follows: Briarwood, Chelsea, Homewood, Hoover, Oak Mountain, Pelham,
2 Spain Park, Thompson, and Vestavia.

- 3
4 1. The Executive Board will resolve any dispute regarding any of the above Community
5 Play Rules. The Executive Board decision on the matter will be final.
6

7 ***Any Members found recruiting from another Member's area can and will be found "Not in***
8 ***good standing with JSYF."*** ***This problem has been the downfall of many outstanding***
9 ***associations.***

10
11 **J. PRACTICE GUIDELINES**

- 12
13 1. No practice with any pads will start any sooner than a date set each year by the Board of
14 Directors. Prior to the start of the JSYF season each team will have a total of 20 practice
15 days. Prior to the school year, a team's week of practice cannot be more than 12 hours.
16
17 2. After the school year starts, a team's week of practice cannot be more than 10 hours.
18 This start date will coincide with the Shelby County Board of Education school year.
19
20 3. Only one practice per day not to exceed three hours of practice on any given day, there
21 will be no exceptions to this rule. *If a team is found in violation, the first offense will be*
22 *a fine as set by the Executive Board of Directors.*
23

24 ***There will be no exceptions to the above rule. Failure to abide by this rule could result in***
25 ***dismissal of any coach or Member found to not being in compliance with JSYF.***

26
27 **K. BOWL – LEAGUE AND POST SEASON PLAY**

- 28
29 1. A JSYF Championship will be at the end of each season's play. The top two teams will
30 compete in this event, hereinafter, known as the JSYF Championship Bowl. The game
31 will be played on the date specified and at the location specified by the Board of
32 Directors.
33
34 2. JSYF will have playoffs to determine two teams to participate in championship games
35 week. The Commissioner will set the date when Playoffs will start. The playoff format
36 will be as follows:
37
38 a. First place team in each weight class plays fourth place team.
39
40 b. Second place team in each weight class plays third place team.
41
42 c. Highest place team is home team and playoff games will be played at their field if
43 available.
44

45 If a tie during the regular season occurs, the following format will determine the pairings:

- 46
47 a. First tiebreaker – Head to head: Win-loss conference games only.

- 1
2 b. Second tie breaker – A Playoff game. Commissioner will determine the Site for this
3 game.
4
5

6
7 **Note: If any weight division has 10-12 teams, then a total of six teams will make the**
8 **playoffs. The following playoff format, will be used to determine what teams make this**
9 **playoff format and what the match-ups will be.**

10
11 **WEEK 1:**

- 12 Seed 1 & Seed 2 receives 1st Round Byes
13 Seed 3 hosts Seed 6
14 Seed 4 hosts Seed 5
15

16 **WEEK 2:**

- 17 Seed 1 hosts lowest Seed remaining from Week 1
18 Seed 2 hosts the other team from Week 1
19

20 **TIE BREAKER**

- 21 1. Head-to-Head
22 2. Point Differential- not to exceed 14 pts. per game
23 3. Points Allowed
24 4. Points Scored
25 5. Coin Toss
26

27 Note: In the event a weight class has 12 or more teams then that division can be split into
28 divisions. In the event this happens 8 teams will make the playoffs, the top 4 teams from each
29 league. The determination of who will be placed into which league (American and National)
30 will be determined by a drawing prior to the start of the season. To determine the two teams
31 that will play for the championship:
32

- 33 a. The top 4 teams in the National and the American League will make the playoffs.
34 b. In each league the higher seed will be the home team for each round. The first round will
35 be the #4 seed at the #1 seed and the #3 seed at the #2 seed. With the two winners
36 playing the second round game at the higher seeds park to see who will play in the
37 Championship game. If teams of equal seeding make the Championship game from each
38 side then the better overall record will be determined by head to head first, then overall
39 record and finally by a coin flip.
40
41 3. If a park is fined and they make the playoffs, their fine(s) must be paid before they can
42 participate in playoff games. If they refuse to pay the fine(s) then they will forfeit the
43 right to participate and the team behind them in the standings will take their place.
44
45 4. No other post-season activities will be scheduled to conflict with this bowl or any other
46 JSYF sponsored post-season play.
47
48 5. No post-season activity will be scheduled after December 31 of the current year.
49

1 6. It will be left to the individual organizations to schedule any bowl games. These games
2 may be scheduled at any time throughout the year, as long as they do not conflict with
3 regularly scheduled games or the JSYF championship Bowl.
4

5 7. The higher seed team will be the Home Team for championship games and playoff
6 games played at a neutral site.
7

8 8. A Member of this organization shall be allowed to participate in any bowl, either in or
9 out of town, at any time as long as it does not interfere with the play of regularly
10 schedule events or games in JSYF.
11

12 9. A Bowl or play-off committee member must be present for all play-off and
13 championship games. He/She must make himself known to all coaches and officials
14 before the game. He/she will be there to handle any controversy and help with
15 interpreting the rules of JSYF. He/She must be neutral and have no ties to the outcome
16 of that game.
17

18 10. The President will assign individuals to be at the JSYF bowl each night to serve on the
19 Protest Committee. If a Member's-Representative is assigned for the night their team is
20 playing, the Member will be responsible to get another Member to represent them on the
21 Protest Committee.
22

23 11. JSYF will collect and retain all gate receipts from championship bowl games.
24 Admission for these games will be as follows: \$5.00 for adults and \$2.00 for children
25 under 12. No charge for children under 6.
26

27 12. JSYF will compensate the officials for these games.
28

29 13. This is the "Three-way round robin playoff scenario" for teams to make the JSYF
30 Playoffs. This is an "on the field" competition between teams. Overtime rules will be used if
31 necessary to bring the competition to a conclusion. A full officiating crew and game clock
32 operator will be needed. If the League collects gate receipts; the League will be responsible for
33 paying the officials and clock operator.
34

35 The Playoff scenario time limit:
36 Two 10-minute halves for Senior Division
37 Two 8-minute halves for Junior Division
38

- 39 The Layout:
- 40 • A coin toss will be conducted to determine which team will have the first "bye".
 - 41 • As with regular season games, a coin toss will be held prior to the start of the game to
42 determine who will receive the kick.
 - 43 • Each half will start with a kickoff between the teams.
 - 44 • Each participant will receive one time out per half.
 - 45 • A chain gang will need to be provided for each game.

- 1 • If two teams are tied at the end of regulation play, overtime rules will be used to
- 2 determine the winner. In the overtime rules, each team will have one offensive and
- 3 defensive series that will begin at the defending teams ten-yard line.
- 4 • The team(s) with the best record(s) at the conclusion of the round robin playoff will
- 5 advance to the JSYF playoffs.
- 6 • In the event that each team has an identical record at the conclusion of the first complete
- 7 round robin playoff, then an overtime rules format will be utilized for the remaining
- 8 round robin series. Each team will play the same number of games under the described
- 9 format.
- 10 • The two remaining teams can play each other "Overtime rules" scenario to see who
- 11 receive the number one seed and home field advantage for their playoff game or the
- 12 League will mandate that they flip a coin for that determination.

13
14 The following is an "example" of how this scenario could play out.

15 As per the coin toss between the three participants (Jets, Giants, and Vikings), it was determined
16 that the first two participants will be:

- 17
- 18 1) Jets and Vikings play. (Giants will sit out and will be the next up.) Jets wins
- 19 either in the time limit or in overtime rules. Jets will sit while,
- 20 2) Viking and Giants play.
- 21 If Giants wins either in the time limit or in overtime, Vikings is eliminated from
- 22 competition.

23
24 However, if Vikings wins either in the time limit or in overtime, Vikings will sit while,

- 25
- 26 3) Giants and Jets play. If Jets wins either in the time limit or in overtime, Giants is
- 27 eliminated from competition. However, if Giants wins either in the time limit or
- 28 in overtime, all three teams will then have one loss each.

29
30 The slate of wins and losses will be wiped clean and all teams will go to the "Overtime Rules"
31 scenario.

- 32
- 33 • The first two participants that will play each other will be:
- 34 • Jets and Vikings (Giants will sit out and will be the next up.)

35
36 The rotation will be same as previous time limit scenario. The first team to lose two times will
37 be eliminated from competition.

38
39 The two remaining teams can play each other "Overtime rules" scenario to see who receive
40 the number one seed and home field advantage for their playoff game or they will flip a coin
41 for that determination.

42 43 **SECTION IV – PROTEST**

44 45 **A. PROCEDURES**

- 1 1. Whenever a matter of protest arises during a game, the Captain or the Coach of the
2 protesting team will immediately notify the Head Official. The Head officials only duty
3 in a protest is to notify the opposing coach and the official scorekeeper. The head coach
4 of the protesting team will be responsible to notify their Board Representative and he/she
5 notifies the President of JSYF that the game was played under protest. No points will be
6 awarded until the protest is settled.
7
 - 8 2. All protest must contain the following information:
9
 - 10 a. Teams and weight division.
 - 11 b. Date
 - 12 c. Time
 - 13 d. Place game played
 - 14 e. Names of all Officials
 - 15 f. Reason for protest and any supporting evidence
 - 16 g. Score
 - 17 h. Time of game (quarter)
 - 18 i. Rule or section violated
 - 19 j. A copy of the protest must be presented to the board at the next scheduled board
20 meeting by the protesting parks representative.
 - 21 k. A \$100.00 fee must accompany any protest and all protest must be in typewritten
22 form. Money will remain in the treasury until the protest is satisfied. (The \$100.00
23 will be refunded only if the protest is won.)
 - 24
25 3. Protests will be handled only if all the above outlined is met. Protests will be heard as
26 follows:
27
 - 28 a. The Executive Board will hear the written protest and it will be discussed based
29 on the grounds of clarity and supporting evidence as presented by both parties
30 involved.
 - 31 b. A general vote will be taken, and a 51% majority of the Executive Board will
32 decide the outcome. JSYF's decision is final. No further discussions will be
33 heard on the conflict.
 - 34 c. All protest should be sent through the protest committee before coming to the
35 Executive Board for review. This committee should make sure the protest has
36 been written up correctly before an Executive Board decision can be made.
- 37 *There will be no exceptions to the above guidelines. If at any time a rule or subject is not*
38 *covered, JSYF Executive Board will make the final decision on the conflict.*
39

40 SECTION V – OFFICIALS

41 42 A. OFFICIALS COORDINATOR

43
44 He/She will be responsible for all officials. This will include the scheduling of officials at all
45 games. He/she will ensure all are qualified and are familiar to the rules of play JSYF plays
46 under the Alabama High School Association rules. Officials will be familiar with the additional
47 rules established by JSYF. A contract must be issued to the JSYF Board at the beginning of the

1 year stating cost per game (Jr. and Sr.) including play-offs and Championship games. If
2 officials wish to quit working with JSYF, they must give notice of current season and 1 year,
3 which will be considered sufficient notice for JSYF Board to respond. The JSYF Board of
4 Directors must approve this contract. Each game will have three (3) officials and one (1)
5 scorekeeper. If the officials do not show up, a fine will be levied by the JSYF.

6
7 **B. GAME OFFICIALS DUTIES:**
8

- 9 1. JSYF shall have only officials registered with the Alabama High School Athletic
10 Association and the fees to be paid shall be determined by contract from the Officials
11 Association and the JSYF Board.
- 12
13 2. Each individual organization will be responsible for the cost of the officials, and their
14 fees will be paid on the field, after the last scheduled game has been played that day. If
15 more than one set of three (3) officials is used, the officials leaving will be paid after the
16 last game they will call for the day.
- 17
18 3. Each park should keep a logbook or some type record of who the officials were and how
19 much they were paid.
- 20
21 4. All officials must complete a payment form before any park pays them. JSYF will
22 provide this form.
- 23
24 5. There will be three (3) officials at each game by JSYF decision.
- 25
26 6. Each park will have an official timekeeper certified by the Officials coordinator, no
27 exceptions.
- 28
29 7. The officials' coordinator of the association cannot officiate every championship game,
30 but must be there to observe his/her crew in case something happens or is needed.

31
32 **C. JEFFERSON-SHELBY YOUTH FOOTBALL UMPIRES ASSOCATION**
33

34 It is the responsibility of the Park Representative to inform the Booking Agent of canceled or
35 non-payable games. (If officials report, single game rate will be paid.)
36 See the attached rate sheet.